

Friends and Family

JULY 2019

Our monthly newsletter
for relatives about life at



**THE
FED**
Heathlands
Village

Resident's Summer Concert



Our resident's Summer Concert was a showstopper, and from the introductory number of Sentimental Journey, through to Hevenu Shalom Aleichem everyone had a great time!

Activity Centre Deputy Manager, Jennifer Berger, said "Everyone has worked so hard to put on a great show, and an audience of almost 80 people shows how much the annual performances are enjoyed by staff, relatives and residents!"



CARE AT HOME OPEN DAY

Care Home Open Day 2019, on 28 June, when care homes nationwide connect to their surrounding communities was celebrated at Heathlands Village.

A group of King David Junior School pupils joined residents for a chatty lunch in the Activity Centre, before being joined by their classmates to perform a delightful concert.



FED FARM DAY
SAVE THE DATE
SUN 8 SEPT

WELCOMING GUEST #100



Since November last year, Heathlands Village has been successfully partnering Bury Council and Bury CCG to support people from the wider community to leave hospital and return home.

This month we welcomed Lily - our 100th guest who looks forward to being back in her Prestwich home very soon with her new friend - Fed Ted!



COMING UP IN JULY!

Besides our regular residents' activities, there are lots of special highlights every month:

Clothes Sale by Bobby's Fashion
Sunday 14 July - 2pm

Grande Dame Theatre Production of Cinderella
Thursday 18 July - 2pm

Table Top Sale
Sunday 21 July - 10am - 4pm

Residents' Forum
Monday 22 July - 10.30am - 12pm

Residents' BBQ
Tuesday 23 July - 12pm - 2pm

Talk by Detective Constable Michael Berger
Friday 26 July - 10.30am

Minifarm Visit
Wednesday 31 July - 2pm - 4pm

Rosemary Hamburger's Quiz
Wednesday 8 August - 6.45pm

Music Session with Keith Laurence
Tuesday 13 August - 2pm

PJ Library Tales and Tea'
Monday 19 August - 2pm - 3.30pm

All activities will take place in the Activity Centre unless stated otherwise.

EMPLOYEE OF THE MONTH!

May's Employee of the Month Award was presented to Karl Quinn, a social care worker on our D2A (Discharge to Assess) unit.

Chief Executive, Mark Cunningham, congratulated Karl for his hard work, noting one stand out nomination:

"Karl came into work on his day off with his hairdressing equipment to do a resident's hair, as they were expecting a special visitor later that day."

A perfect example of providing person-centred care.

Congratulations Karl, very well deserved!



AJEX ON PARADE



On Sunday 23rd June, we proudly hosted the annual AJEX March at Heathlands Village.

Residents and visitors stood to attention as inspecting officer, Mark Adlestone OBE DL, The High Sheriff of Greater Manchester, led the procession.

Entertainment was provided by Besses o' the Barn Band.



BUILDING UPDATES

The floor to the milky kitchen at Heathlands Village will be refurbished from 1st July, with the kitchen being out of use for approximately two weeks. Menus have been adapted so there should be minimal disruption to residents' meals. The Catering Department will keep everyone updated if there are any further changes.

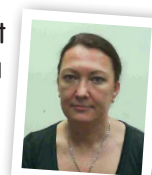
With one eye constantly on the development of services in line with the community's needs and maintaining the highest level of care, The Fed is considering options to extend Beach House, across the ground floor of Adlestone House.

The aim is to increase accommodation in this state-of-the-art residential dementia household. We are striving to obtain funding for this project which is currently in the planning stage. The situation is fluid, and we will keep you updated.

SAY HELLO TO...

In June, our Simon Jenkins Nursing Unit welcomed Registered Nurse, Jelena Ukolova, to the team.

Look out for her on your next visit!



HEATHLANDS VILLAGE RELATIVES' FORUM

For details of the next meeting please contact
heathlandsrelativesforum@gmail.com or visit www.heathlandsrelativesforum.co.uk



Follow us and stay in touch at:



@THEFEDManchester



@the_fed



@FED_Manchester